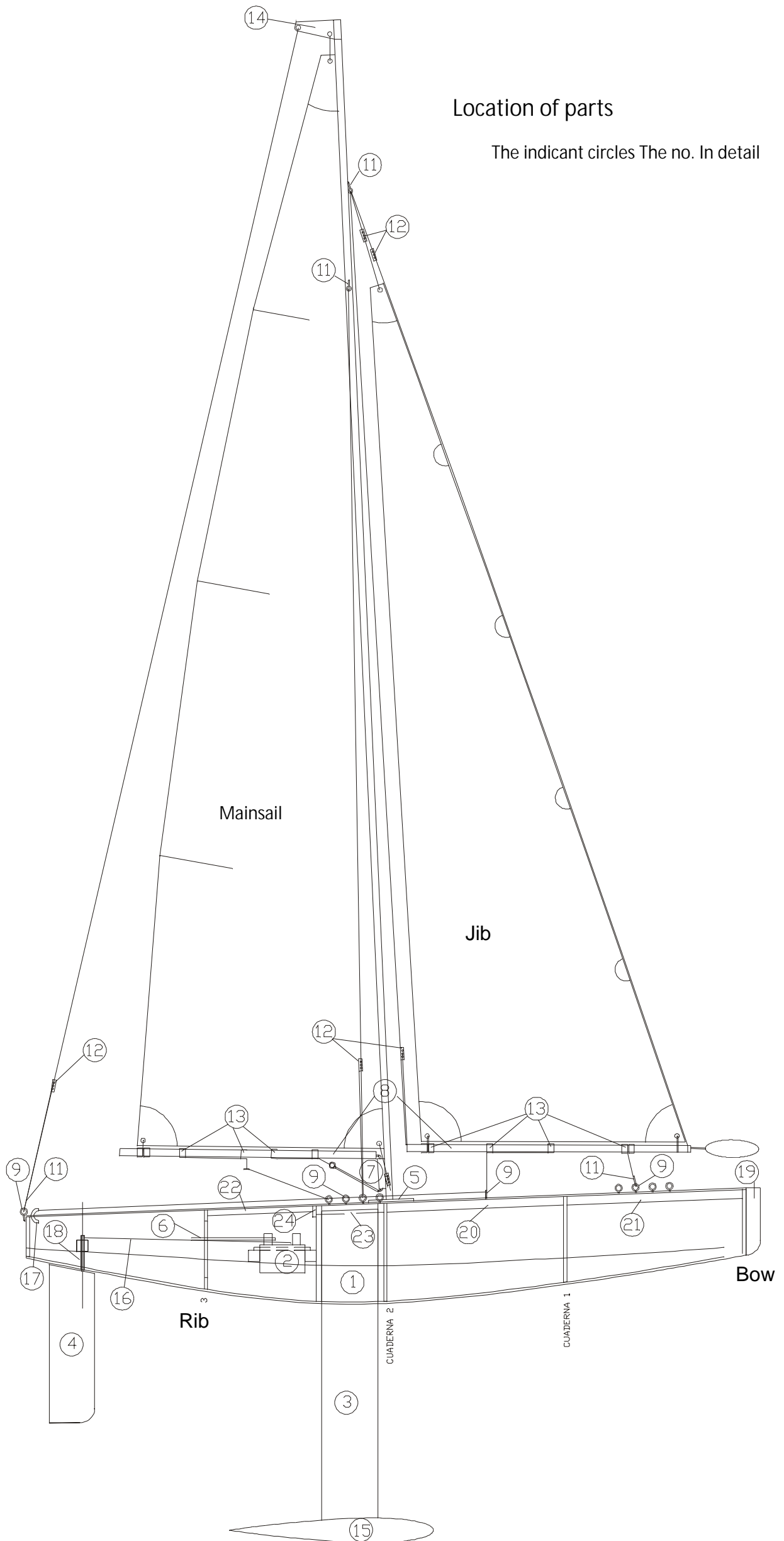


**JIF.65** VELERO  
CLASE RG-65

Length = 65 cm.  
width = 17.2 cm.  
Design = 1.00 kg.  
Weight = M. LANGE  
date = 01/08/02

# Location of parts

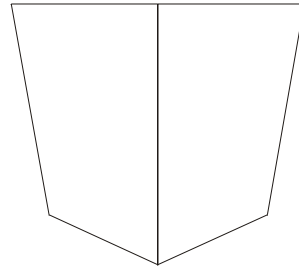
The indicant circles The no. In detail



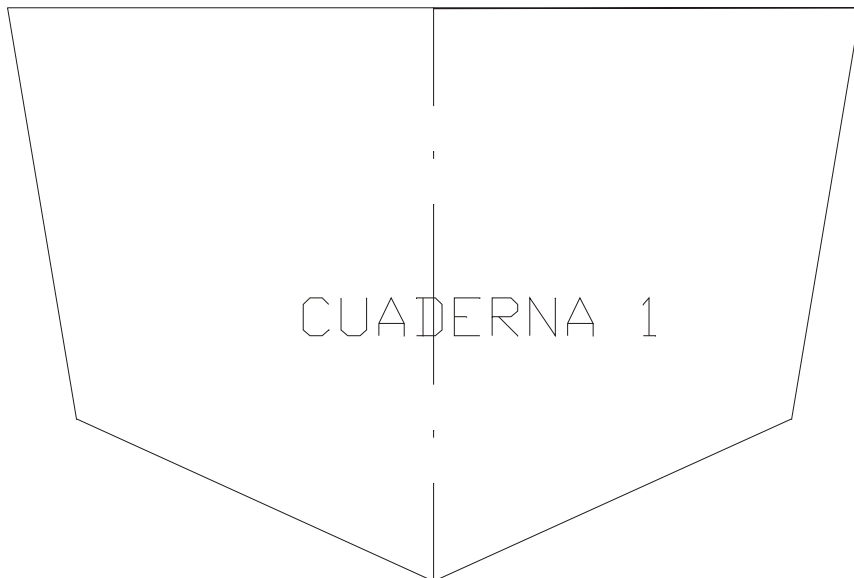
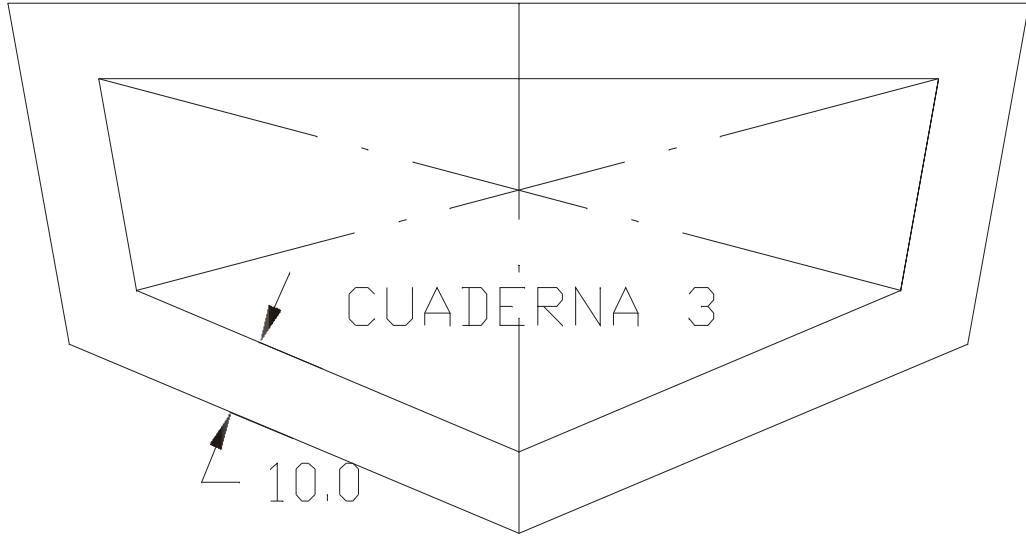
# Notebooks

Thickness = 3mm. Balsa

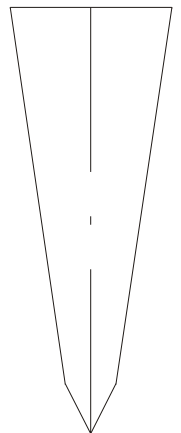
ESCALA 1 : 1



Stern Esppa

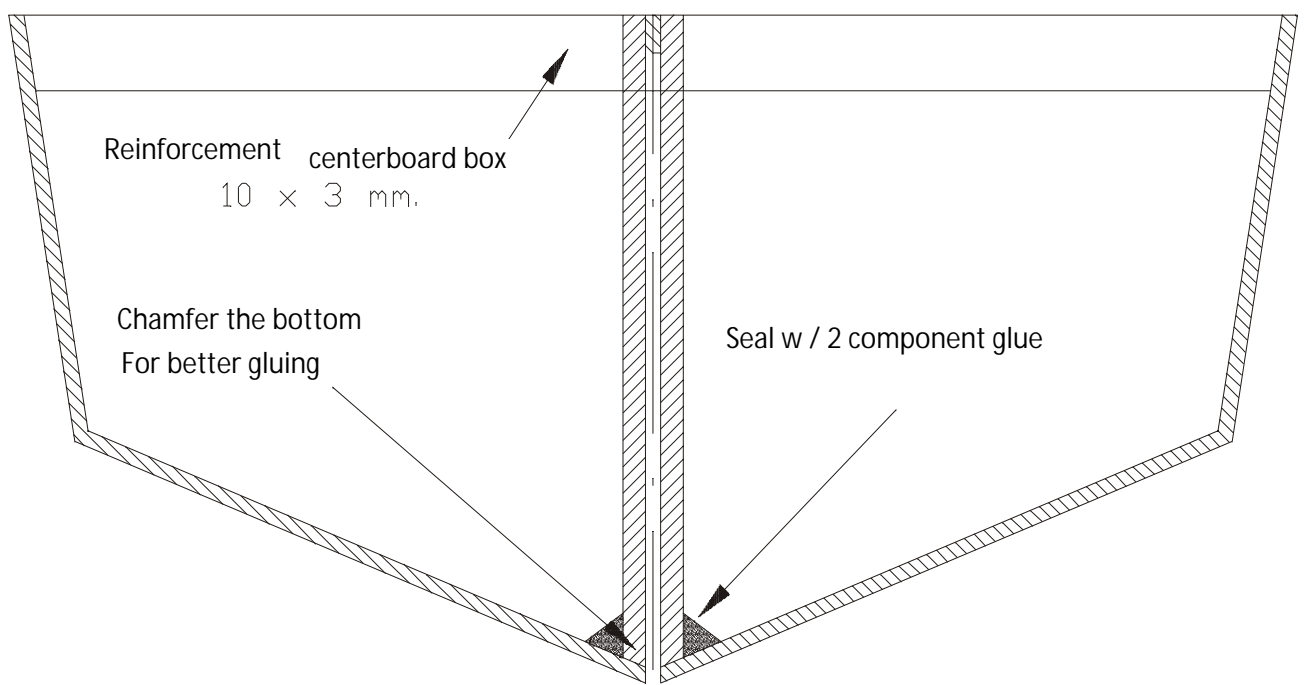
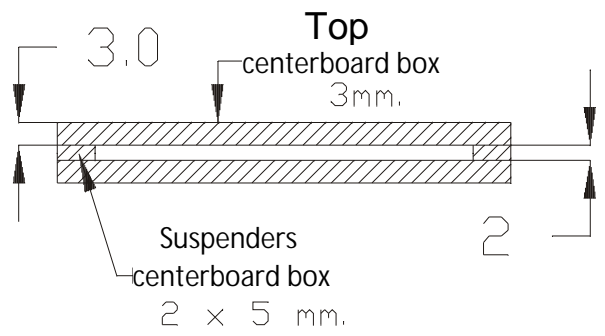
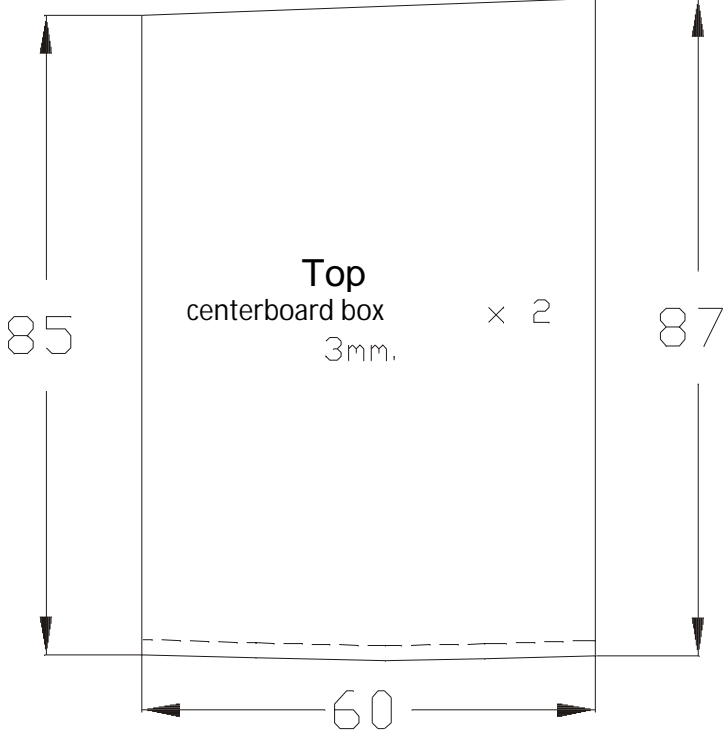
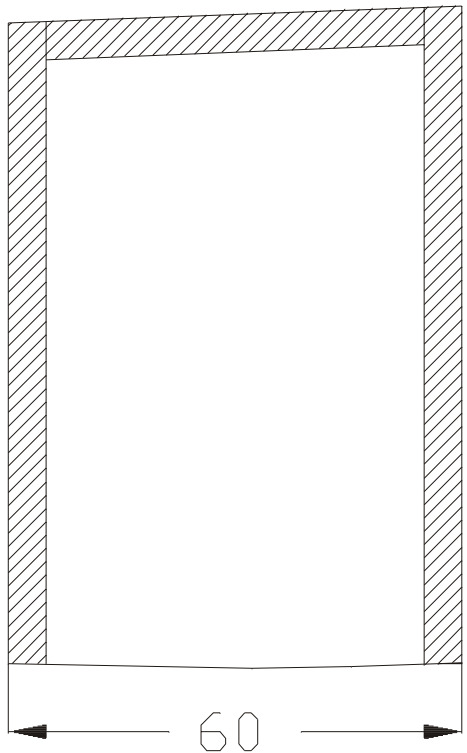
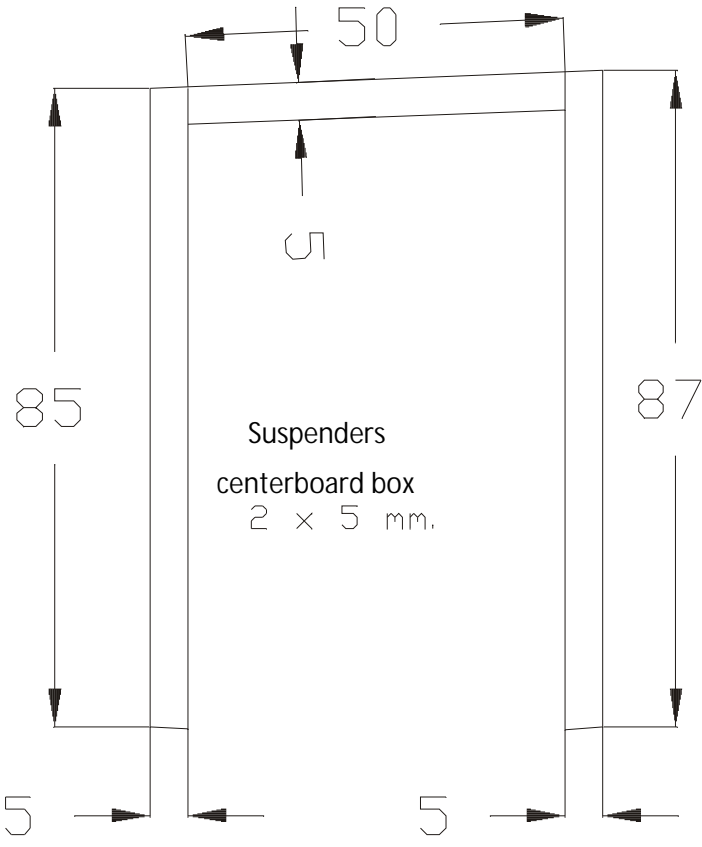


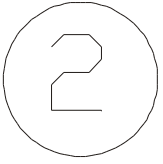
Bow



1

centerboard box  
CAJA DE ORZA  
ESCALA 1 : 1



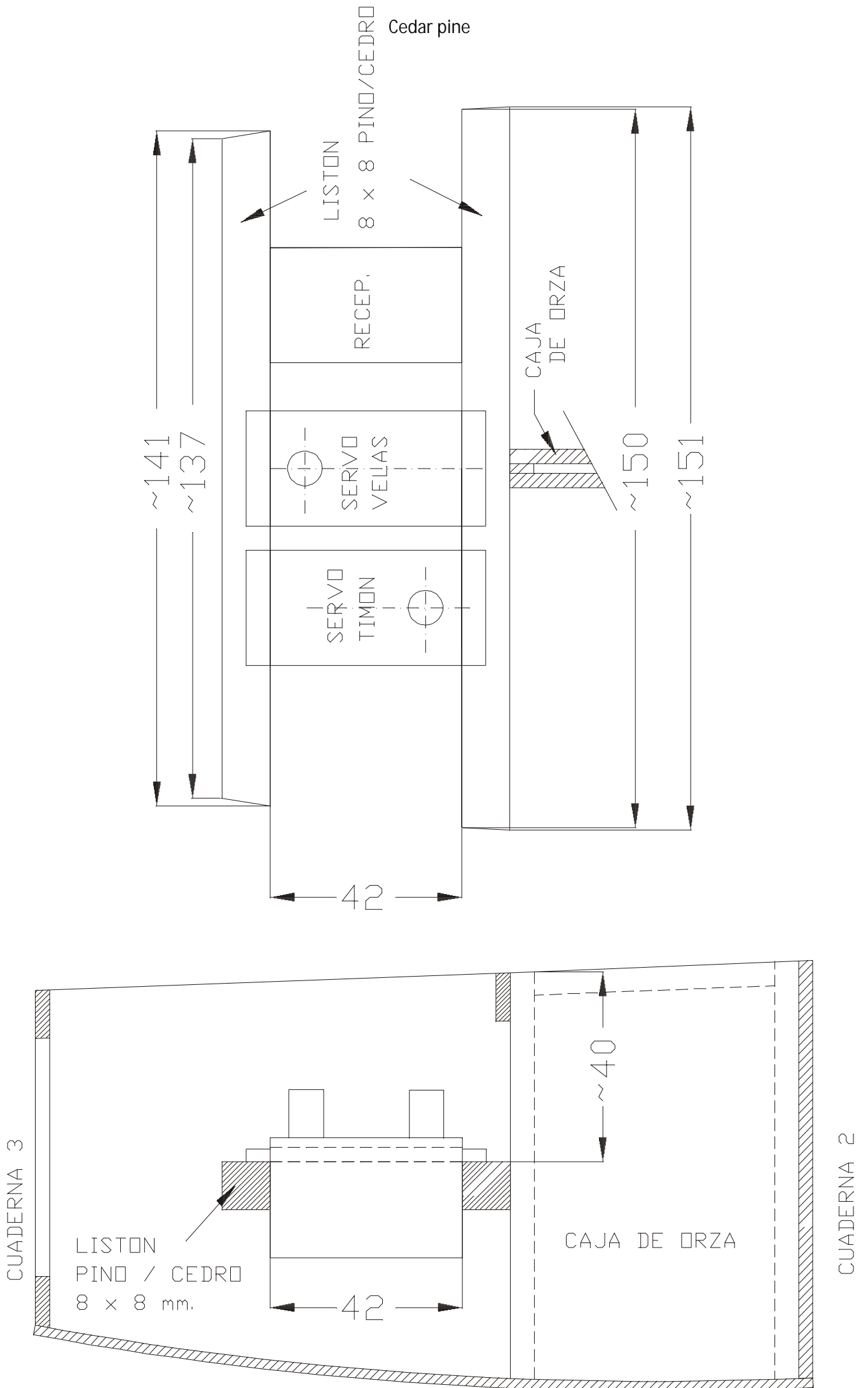


Support      SERVO S

Note the dimensions

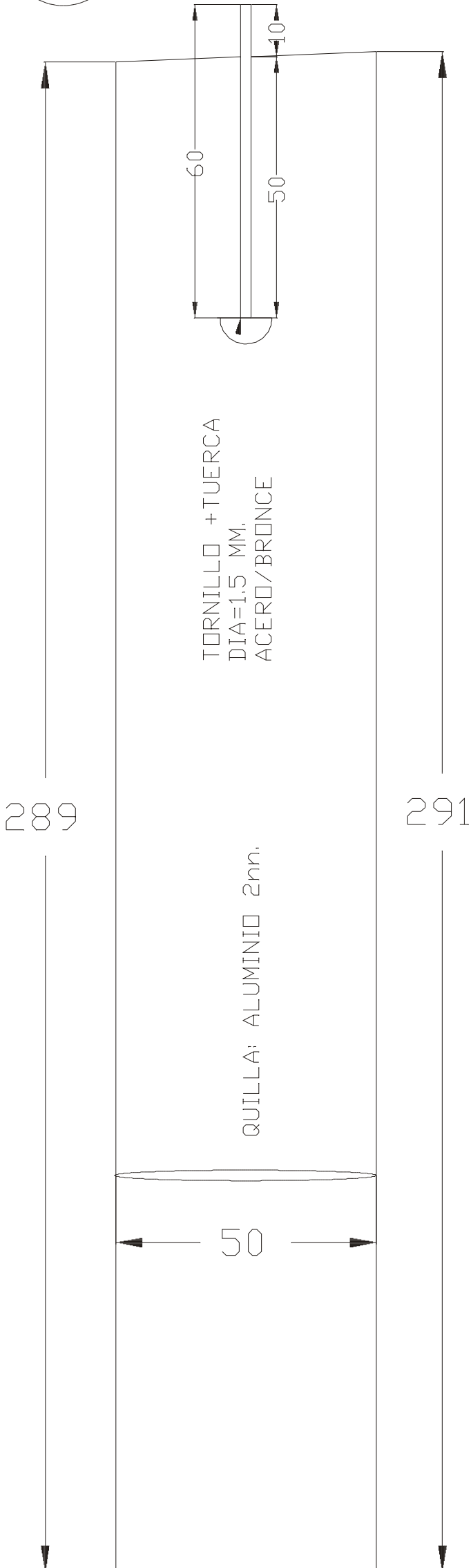
CON (~) They are approx.

ESCALA 1: 1



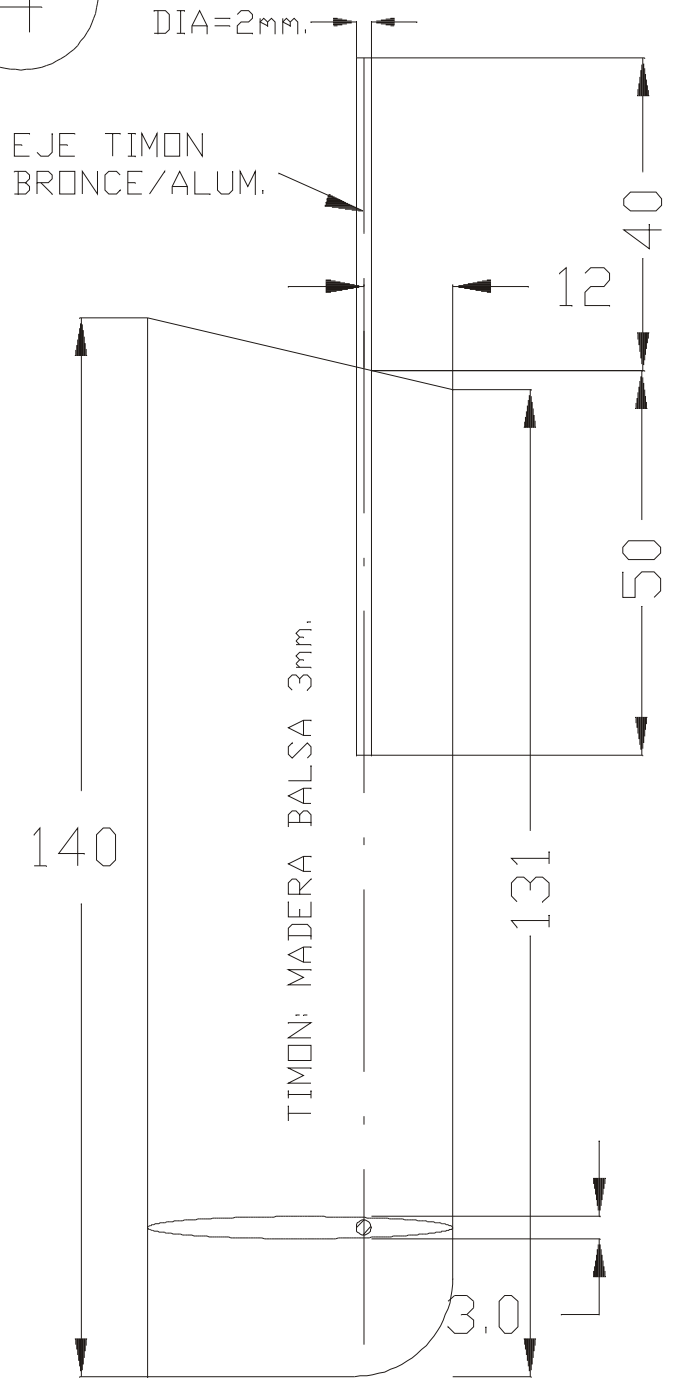
3

QUILLA  
ESCALA 1: 1



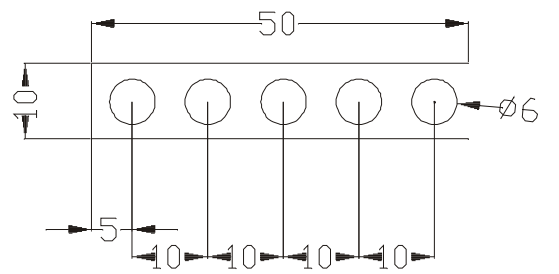
4

TIMON ESCALA 1: 1



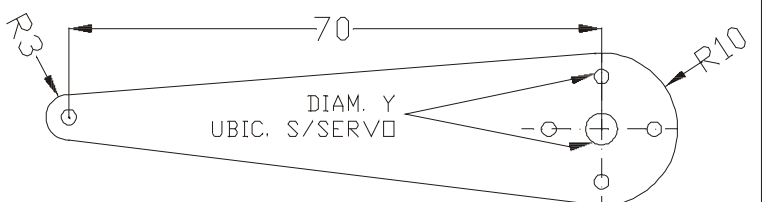
5

APOYO MASTIL  
ALUMINIO 2mm.  
ESCALA 1: 1



6

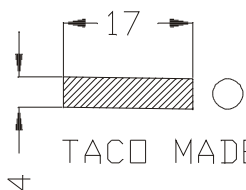
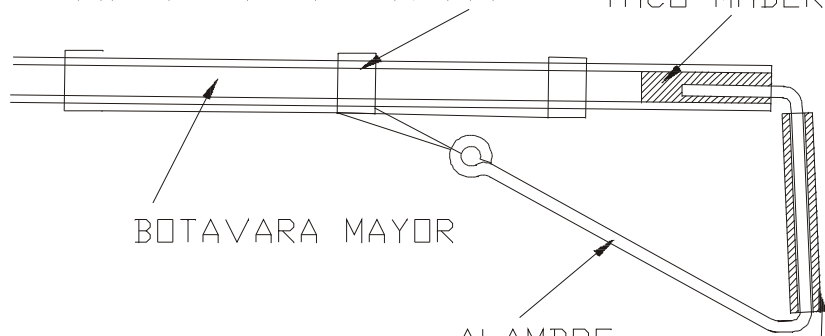
BRAZO SERVO  
ESCALA 1: 1  
ALUMINIO 2mm.



7

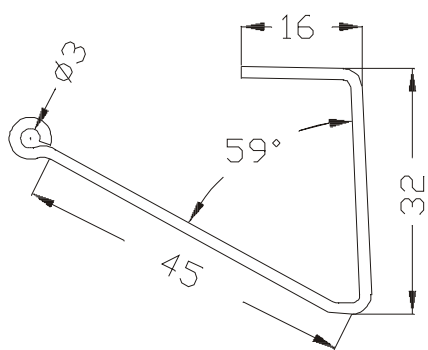
DETALLE GANSERA Y VANG ESCALA 1:1

REGULADORES DE BOTAVARA TACO MADERA

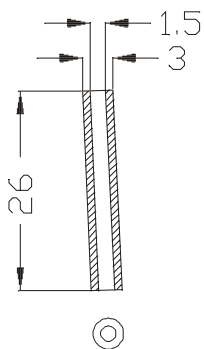


TACO MADERA

BUJE DIA=3mm.



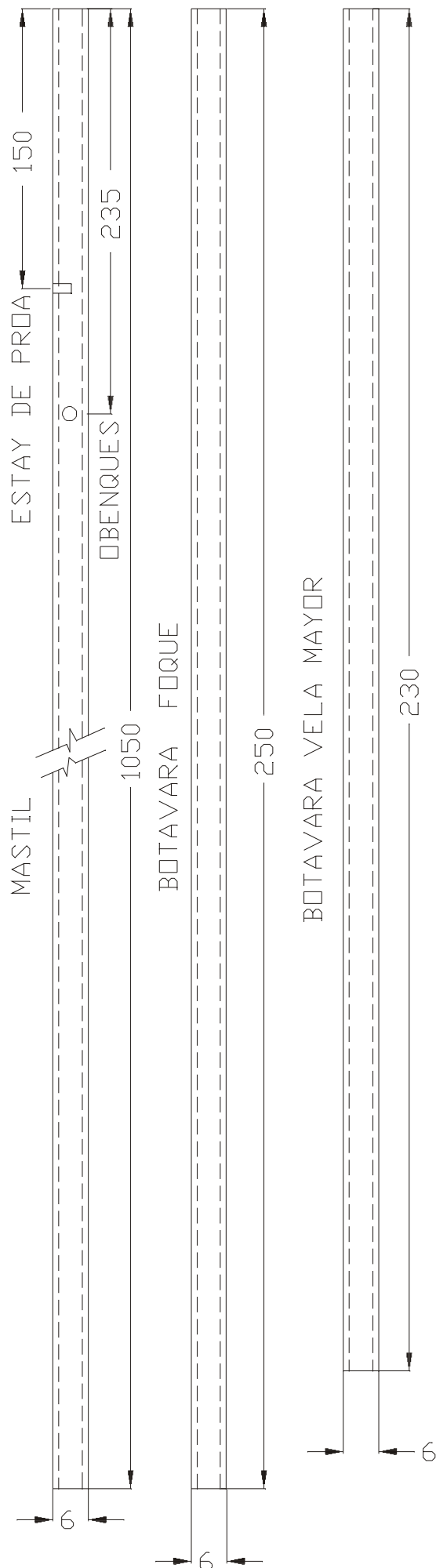
PLEGADO ALAMBRE DIA=1.5 mm.



BUJE BRONCE/ALUM. PLASTICO DIA=3mm.

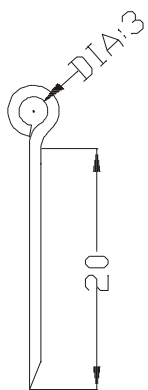
8

TUBO FIBRA CARBONO O ALUMINIO DIAMETRO EXT.=6mm



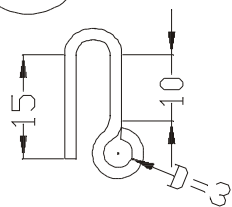
9

ARRAIGOS A CUBIERTA SIN ESCALA CANT= 16



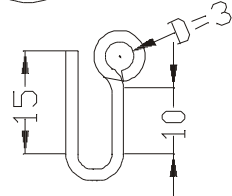
10

ARRAIGOS AL MASTIL SIN ESCALA CANT=3



11

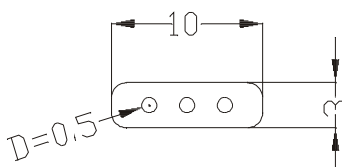
TERMINALES INFERIORES OBENQUES S/ESCALA CANT= 4



LOS ARRAIGOS Y TERMINALES SON DE ALAMBRE DENTAL DE DIA.= 0,8 mm.

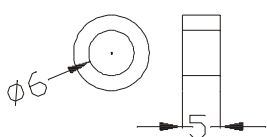
12

REGULADORES OBENQUES PLASTICO E=2 mm. SIN ESCALA CANT= 6



13

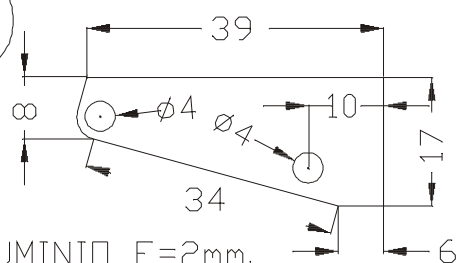
REGULADORES BOTAVARAS CANT= 9 SIN ESCALA



MANGUERA PLASTICA DIA.INT.=6mm.

14

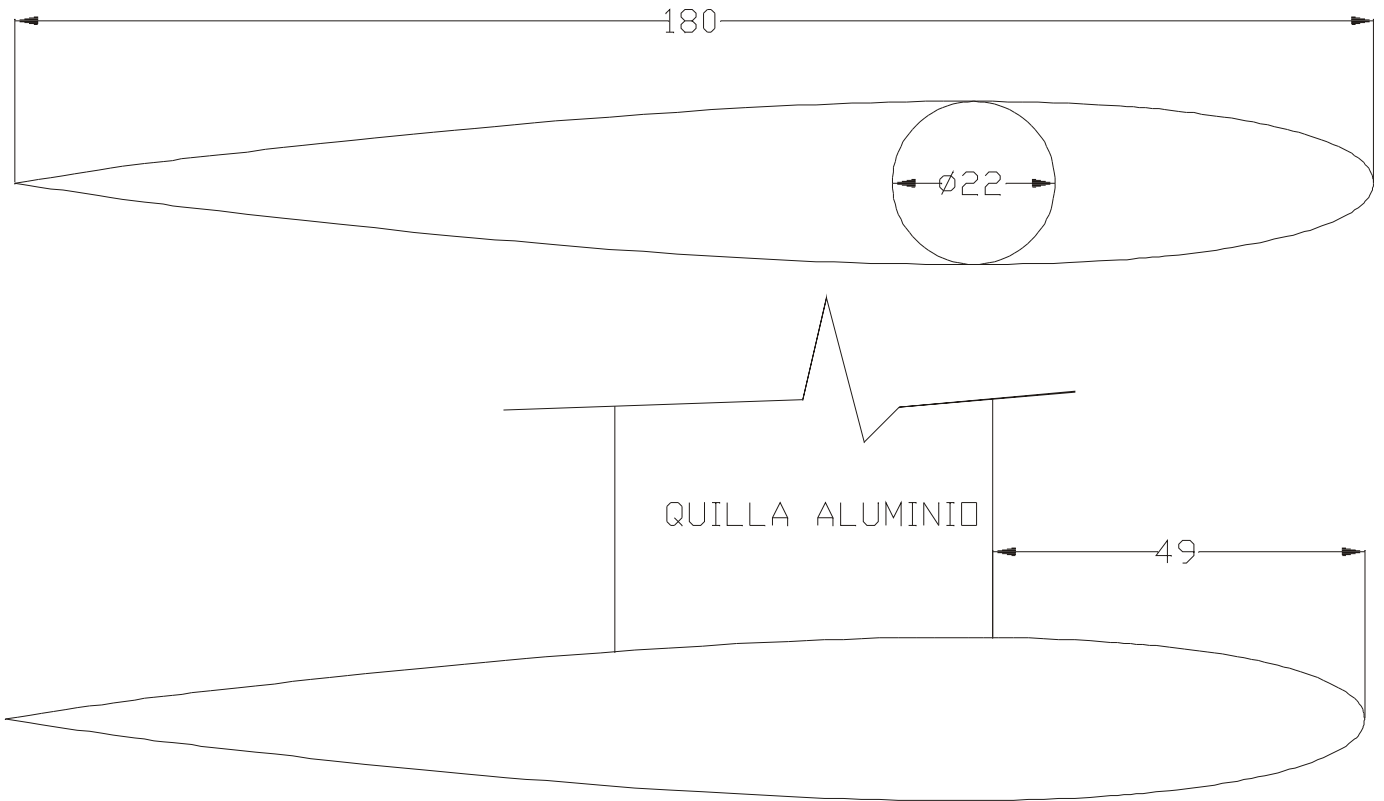
TOPE MASTIL-ESC. 1:1



ALUMINIO E=2mm.

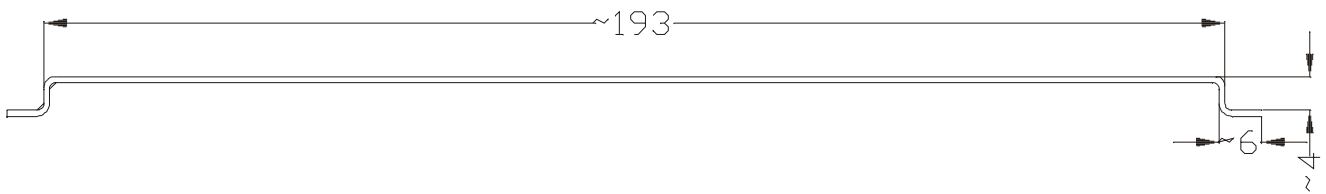
15

BULBO DE PLOMO- PESO APROX.=460 Gr.  
ESCALA 1: 1



16

DETALLE PROLONGACION BRAZO TIMON  
ALAMBRE COBRE/BRONCE/ACERO  
DIA.=2mm. - SIN ESCALA



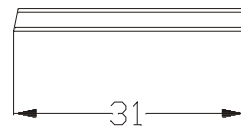
17

REENVIDO ESCOTAS  
DIA.=2mm. - SIN ESCALA  
TUBO PLASTICO



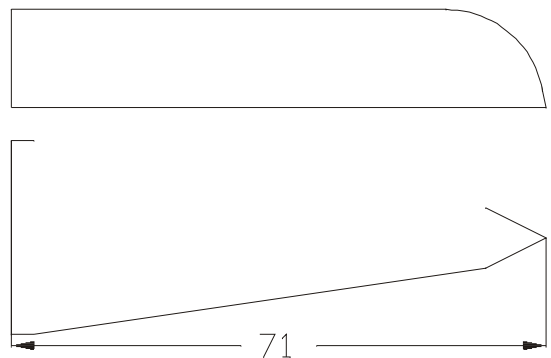
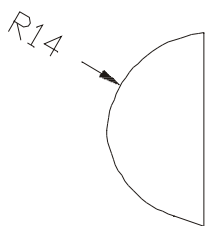
18

BUJE TIMON DIA.=2mm. -S/ESCALA  
ALUM.-BRONCE



19

PROTECCION PROA  
ESCALA=1:1





20

REFUERZO APOYO MASTIL  
8 x 8 PINO/CEDRO

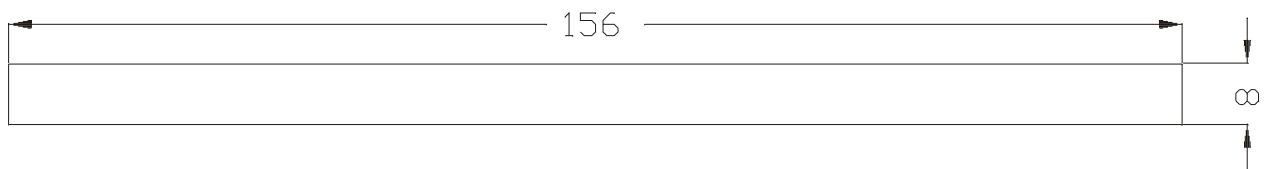
ESCALA=1:1



21

REFUERZO ESTAY DE PROA  
8 x 8 PINO/CEDRO

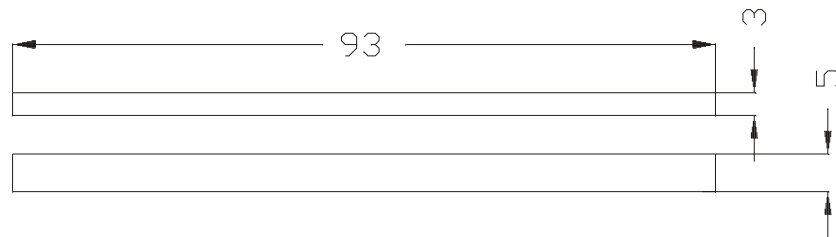
ESCALA=1:1



22

REFUERZO TAPA INSPECCION  
5 x 3 BALSA - CANT=2

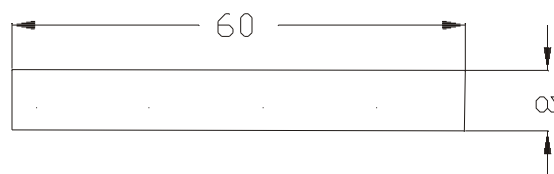
ESCALA=1:1



23

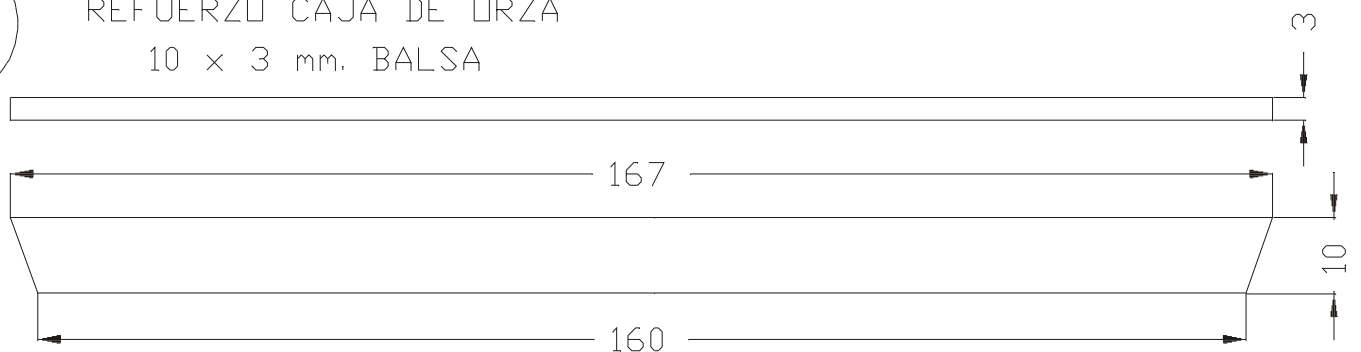
REFUERZO LANDAS  
8 x 8 PINO/CEDRO - CANT=2

ESCALA=1:1



24

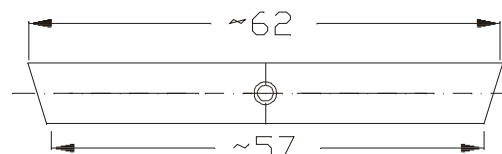
REFUERZO CAJA DE ORZA  
10 x 3 mm. BALSA



25

REFUERZO EJE TIMON  
8 x 8 PINO/CEDRO

ESCALA=1:1



# ESQUEMA DE ARMADO - PLANTA Y CORTE

S/ESCALA

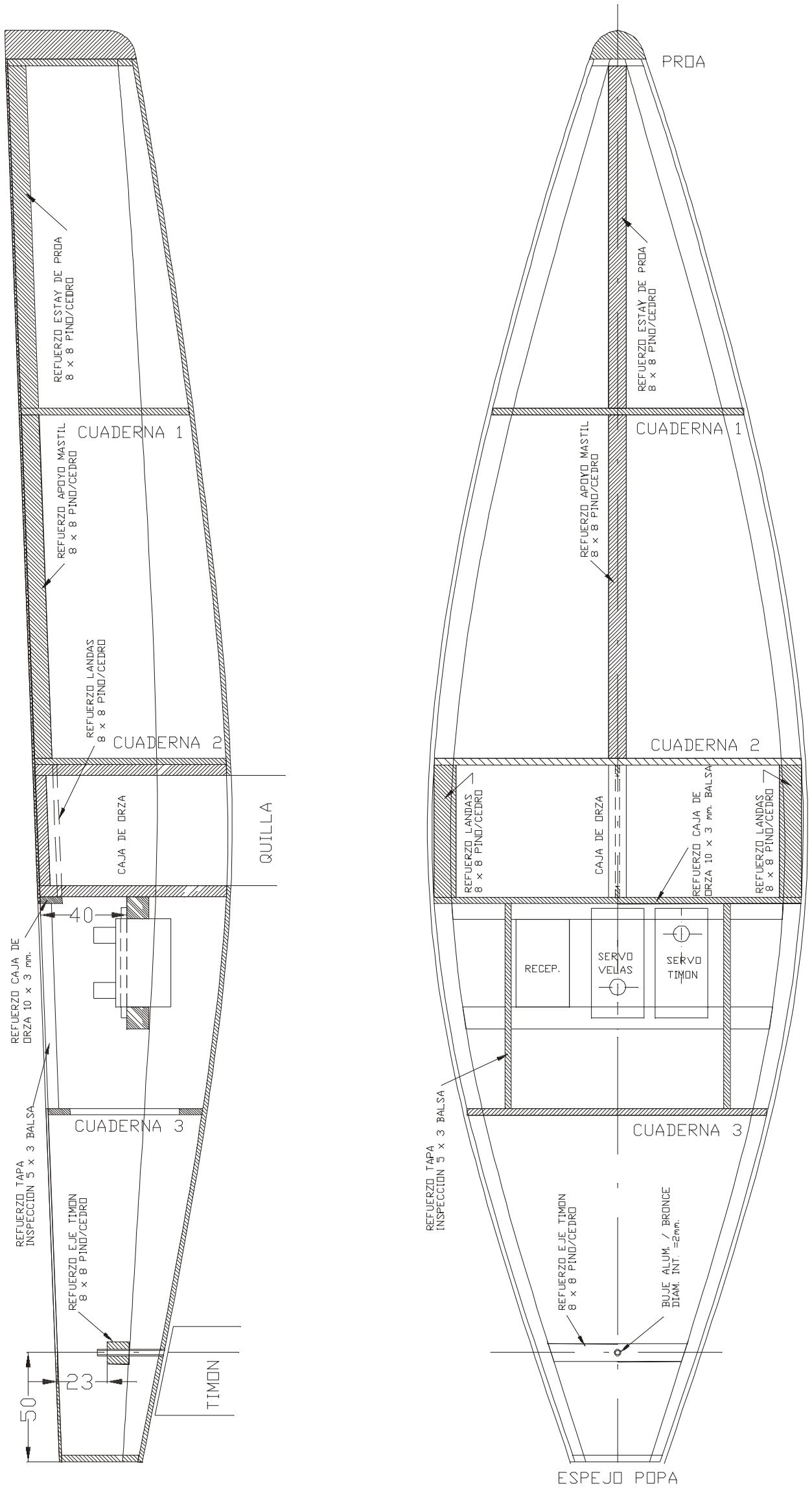
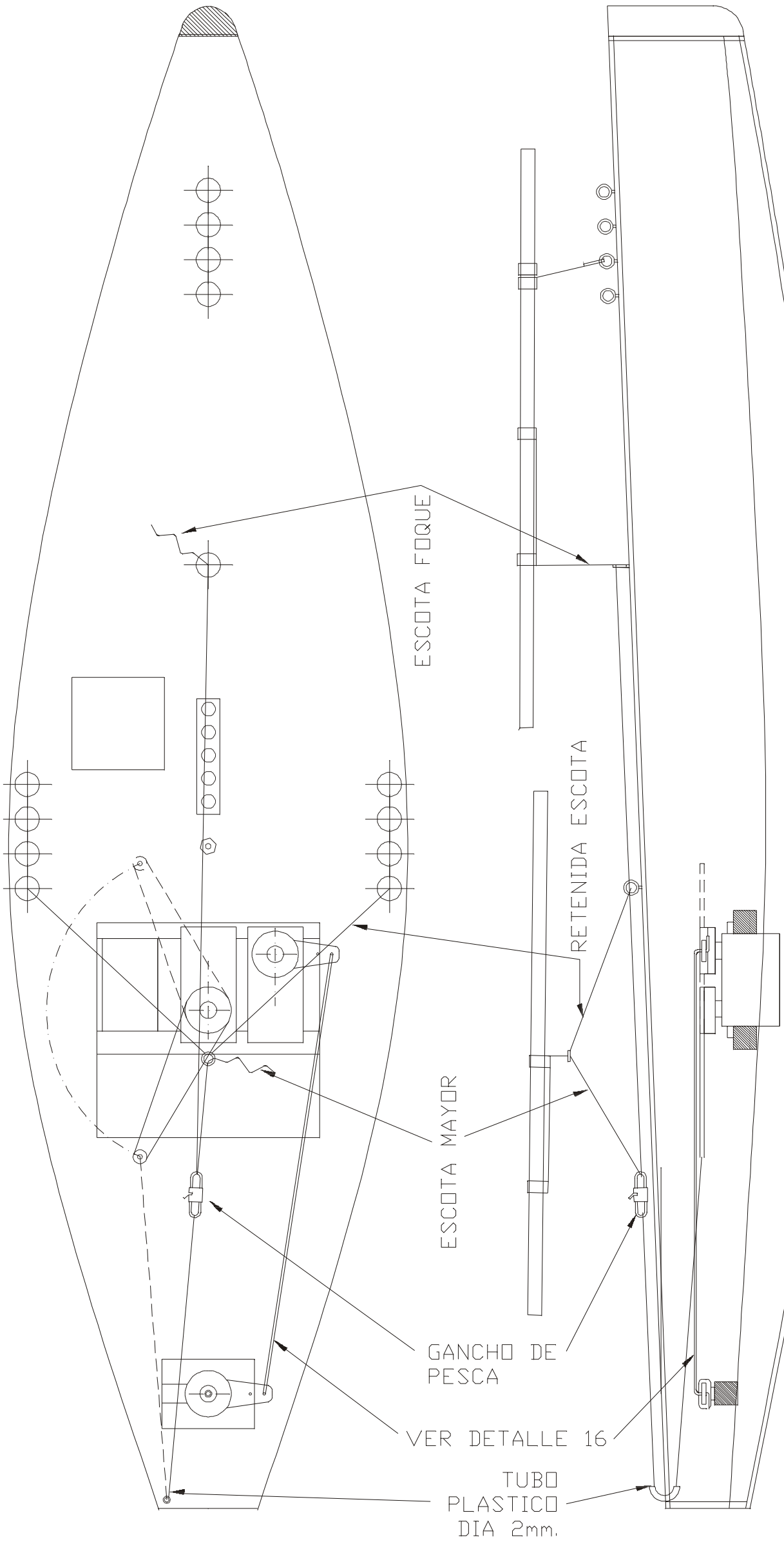
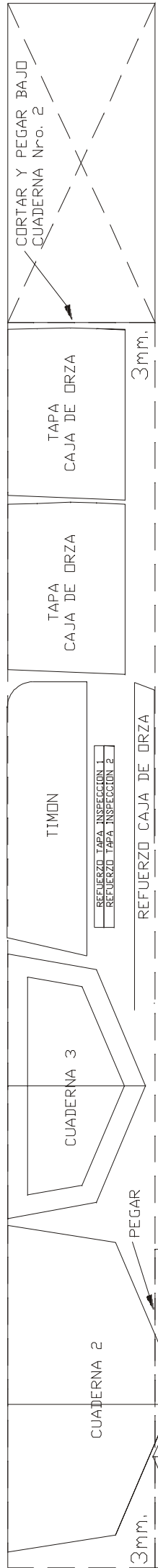
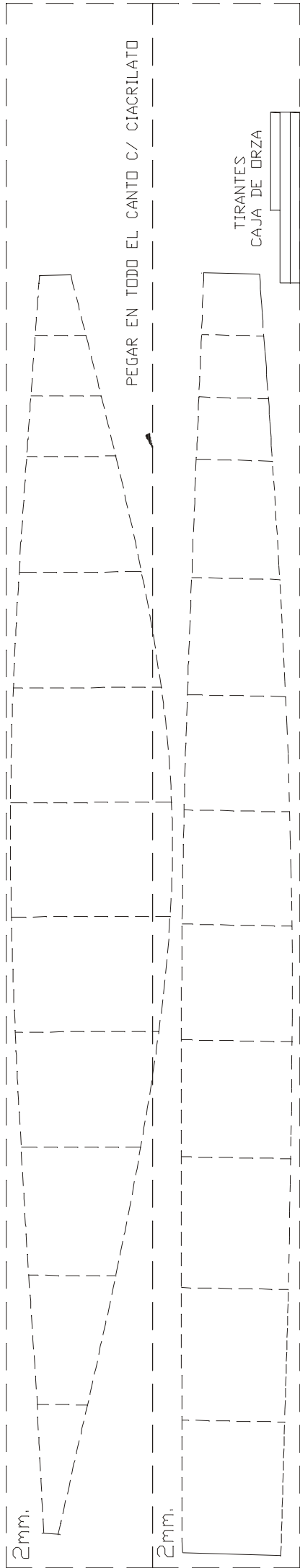
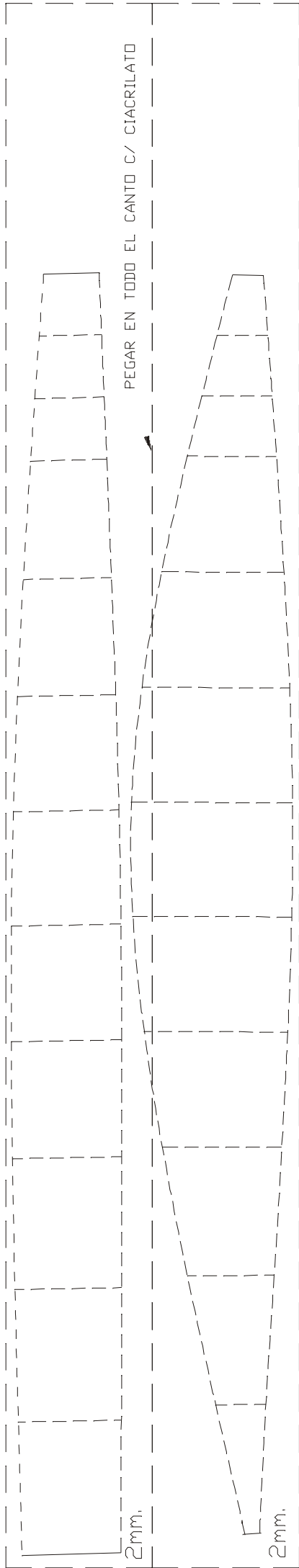
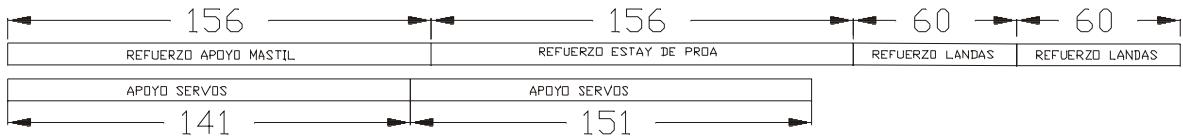


DIAGRAMA DE ESCOTAS  
Y BRAZOS DE SERVIDORES



MADERA DE PINO / CEDRO 8 x 8 mm. TOTAL=~750mm



NOTA: LAS TABLAS DE MADERA BALSA SE CONSIDERAN DE 75mm. x 800 mm. EN EL CASO DE DISTINTAS MEDIDAS REUBICAR LAS PIEZAS PARA SU MEJOR APROVECHAMIENTO.

TOTAL MADERA BALSA  
4 DE 2 mm.  
1 DE 3 mm.